

1

2

3

4

A

A

B

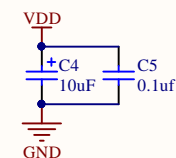
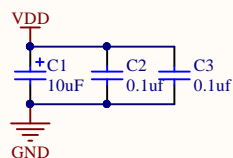
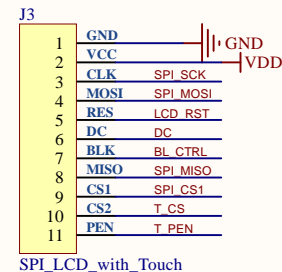
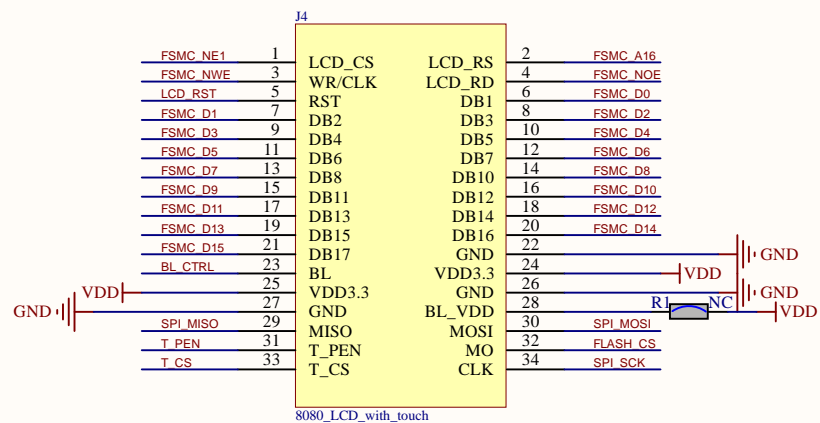
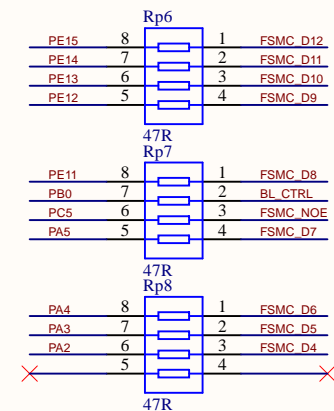
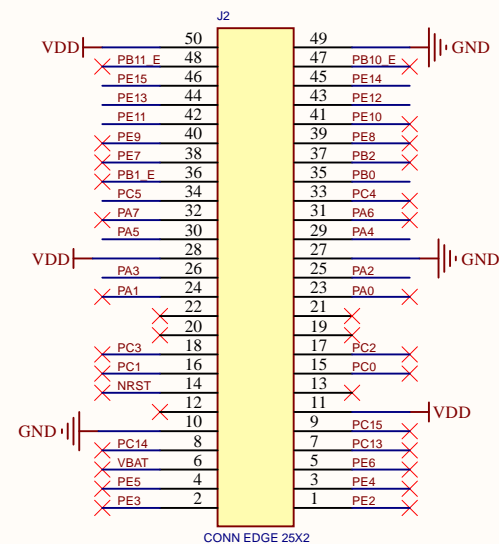
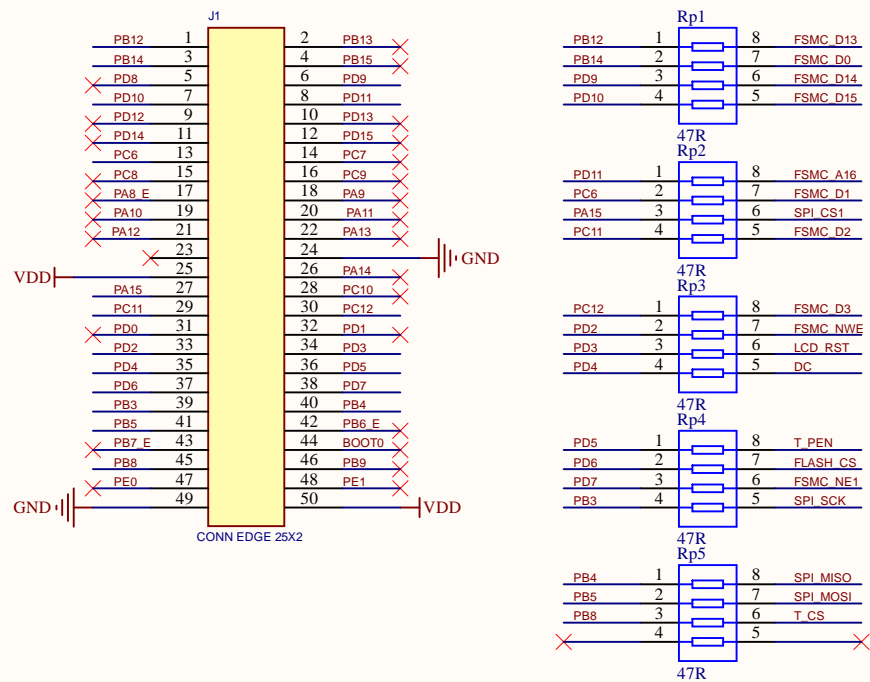
B

C

C

D

D



NOTE:

1. For AT32F403A, config XMC_GRP[2:0] = 001
2. The SPI using PA15/PB3/PB4/PB5, remap JTAG I/O before using SPI LCD pannel

Artery Technology Corp.

Project: AT32-LCD-EV

Title:

Date: 2019/10/21

Sheet: 1 of 1

Rev: 1.0

1

2

3

4