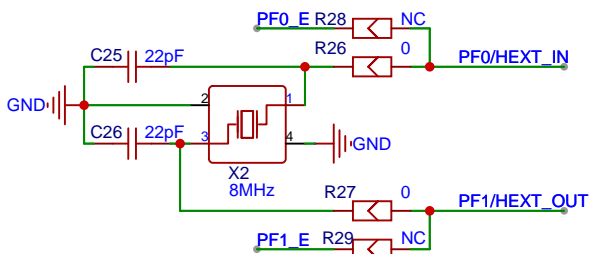
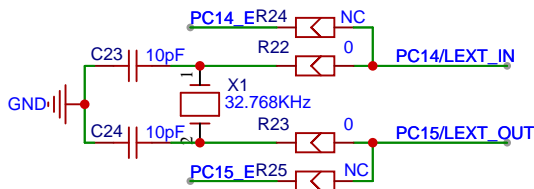
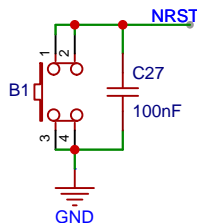
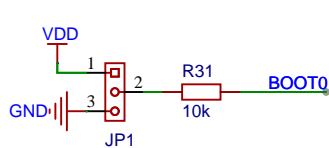


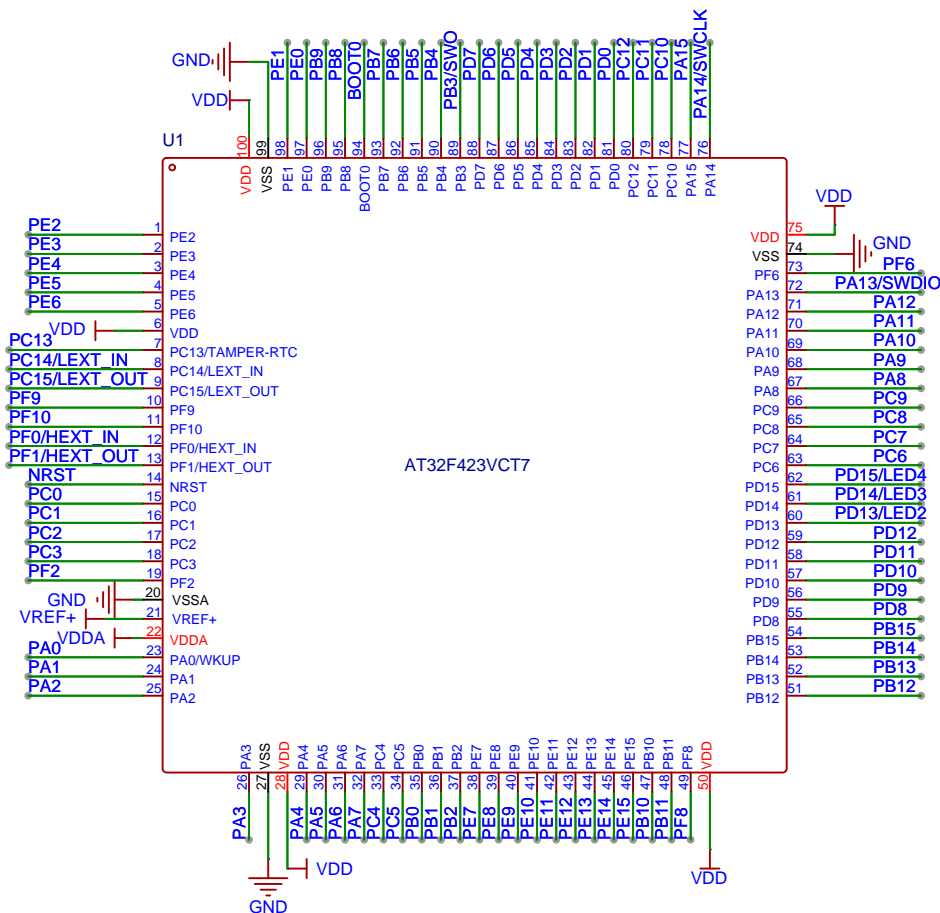
MCU power supply




Crystal

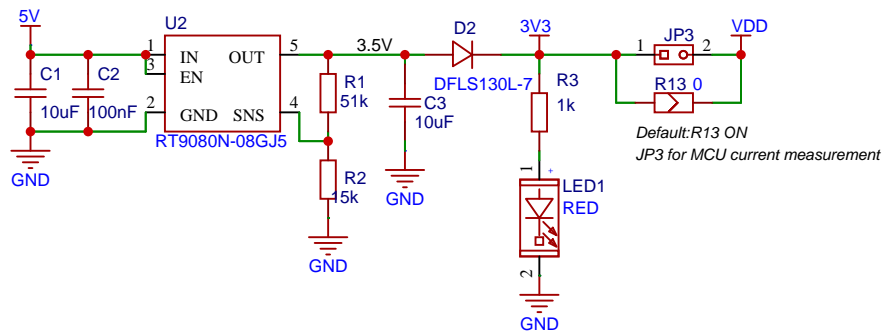


Boot & Reset

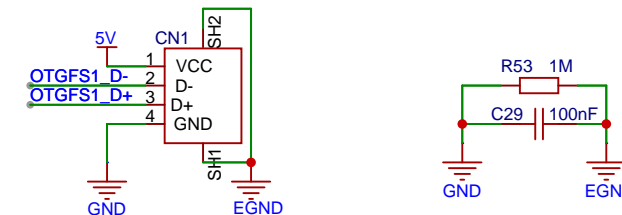


MCU

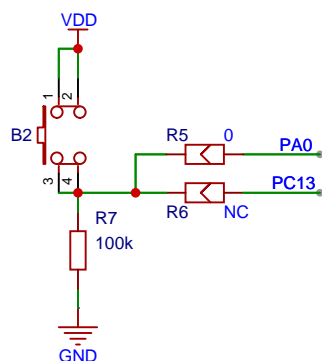
Project:	AT-START-F423	Ver:	1.1
Title:	MCU	Page:	2
	Company: Artery Technology		Size: A4
	Date: 2024-03-29	Drawn:	



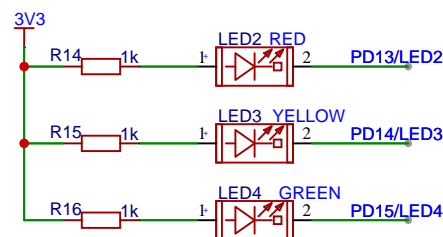
AT-START power supply



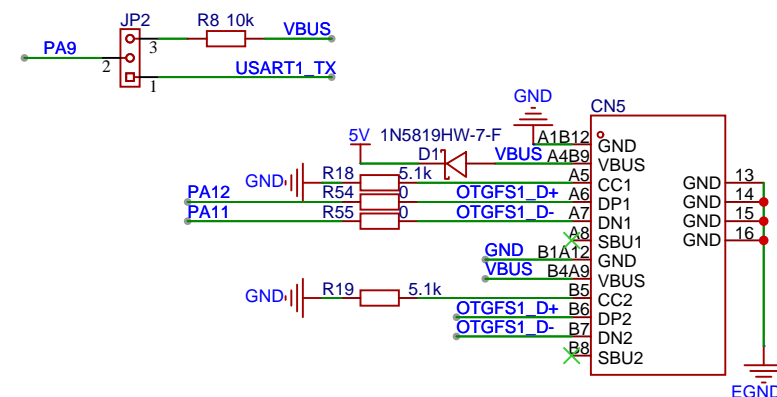
USB host



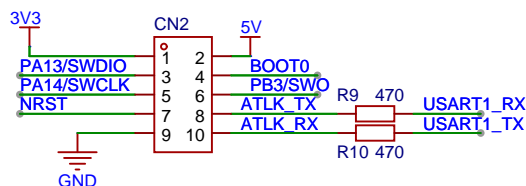
User key



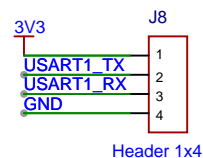
LED



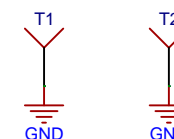
USB device




AT-Link connector



USART1 for ISP

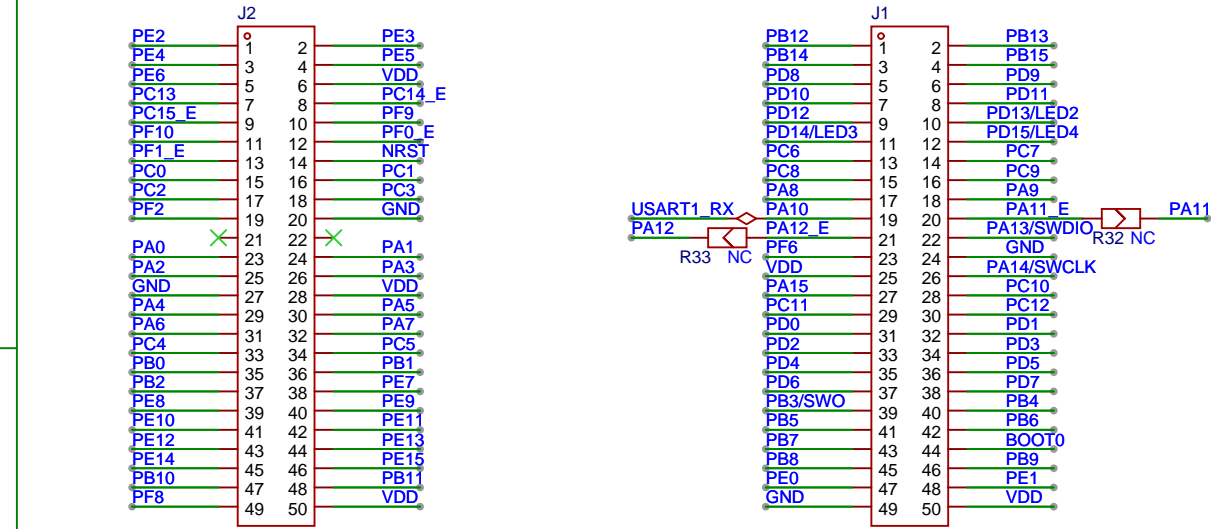


Test points

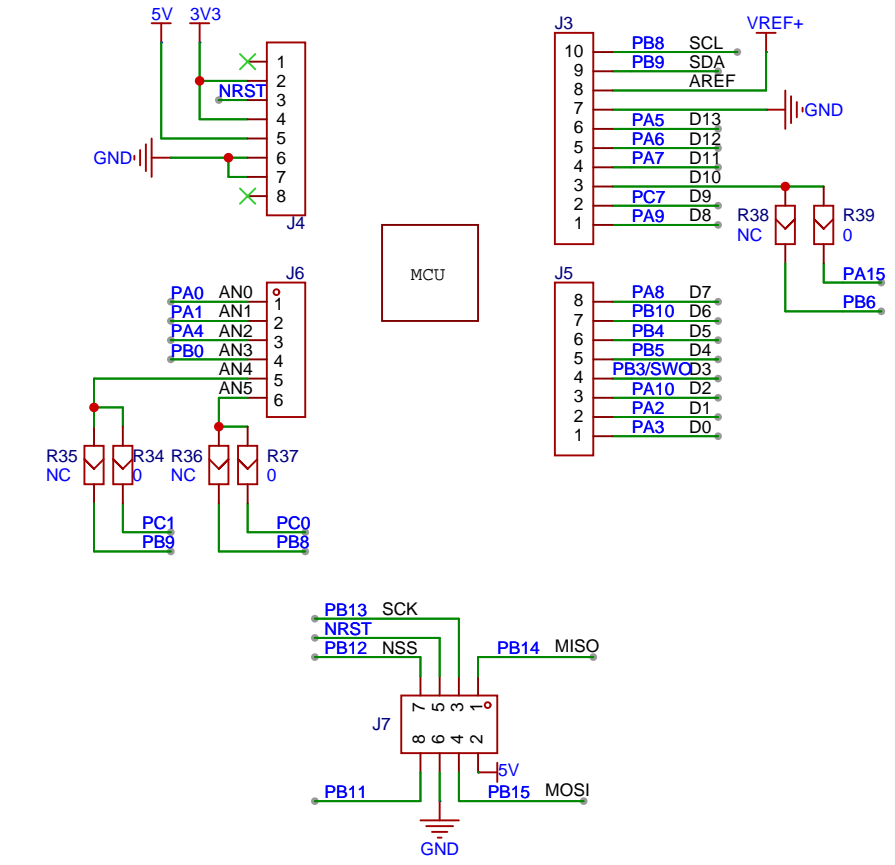
Project: AT-START-F423		Ver: 1.1
Title: Power & Peripherals		Page: 3
	Company: Artery Technology	
	Date: 2024-03-29	Size: A4
Date: 2024-03-29		Drawn:

A


B



LQFP100 I/O extension connectors



Arduino UNO R3 connectors

Project:	AT-START-F423	Ver:	1.1
Title:	Extension connectors	Page:	4
	Company: Artery Technology		Size: A4
	Date: 2024-03-29	Drawn:	

A

B