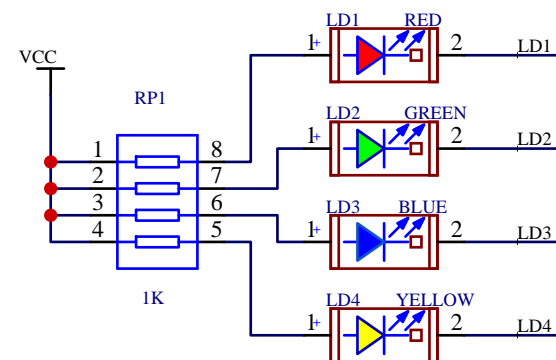
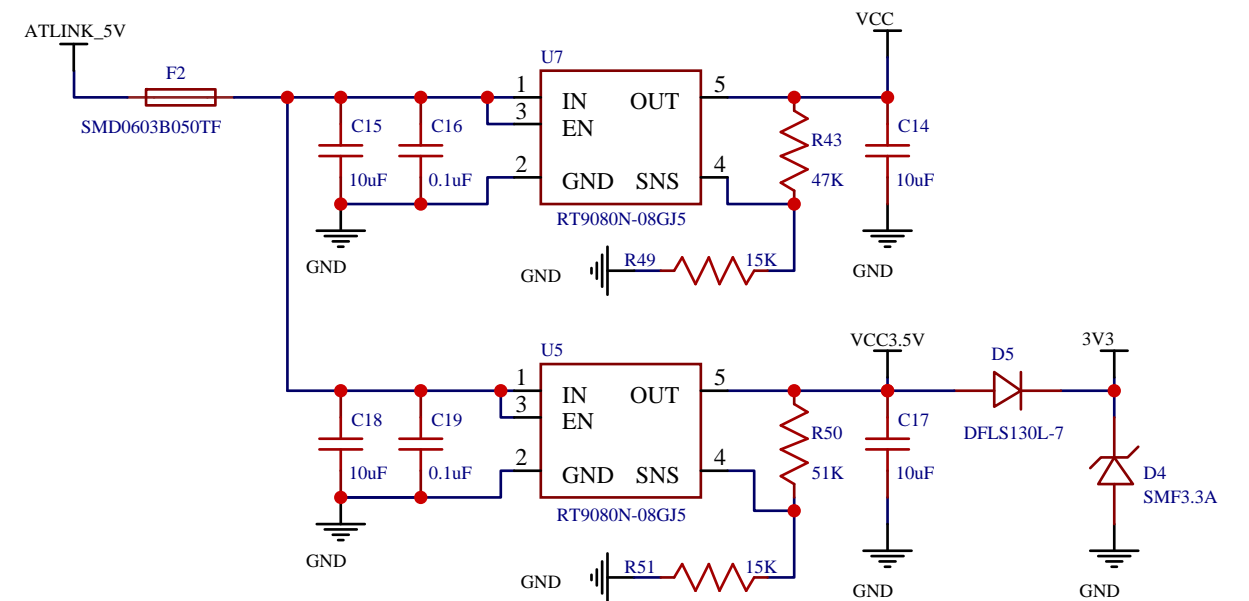
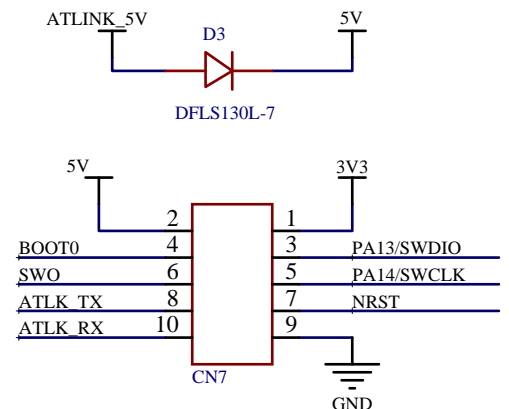



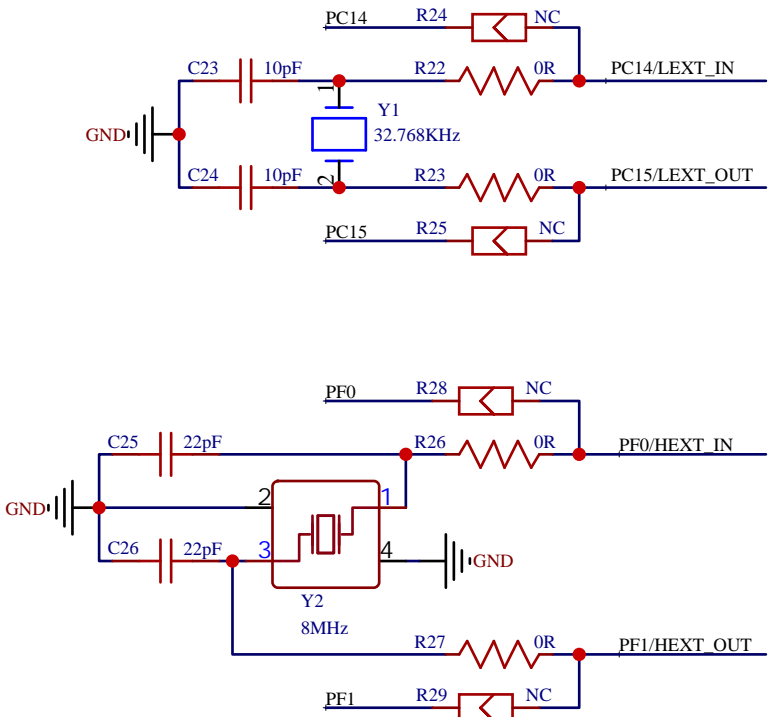
AT-Link power supply

[illegible]

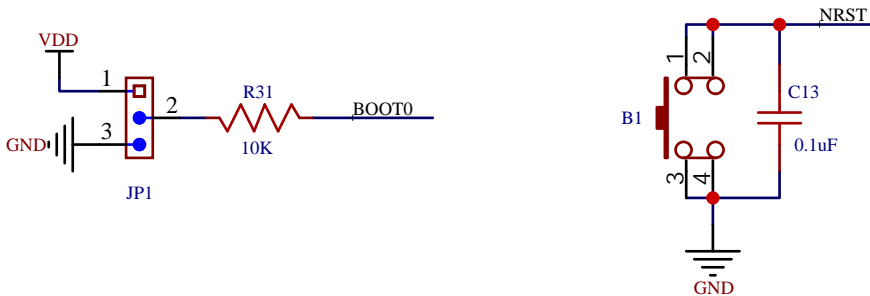
TITLE: AT-Link-EZ		REV: 1.2
	Company: Artery Technology	Sheet: 1
	Date: 2021-12-20 Drawn By:	



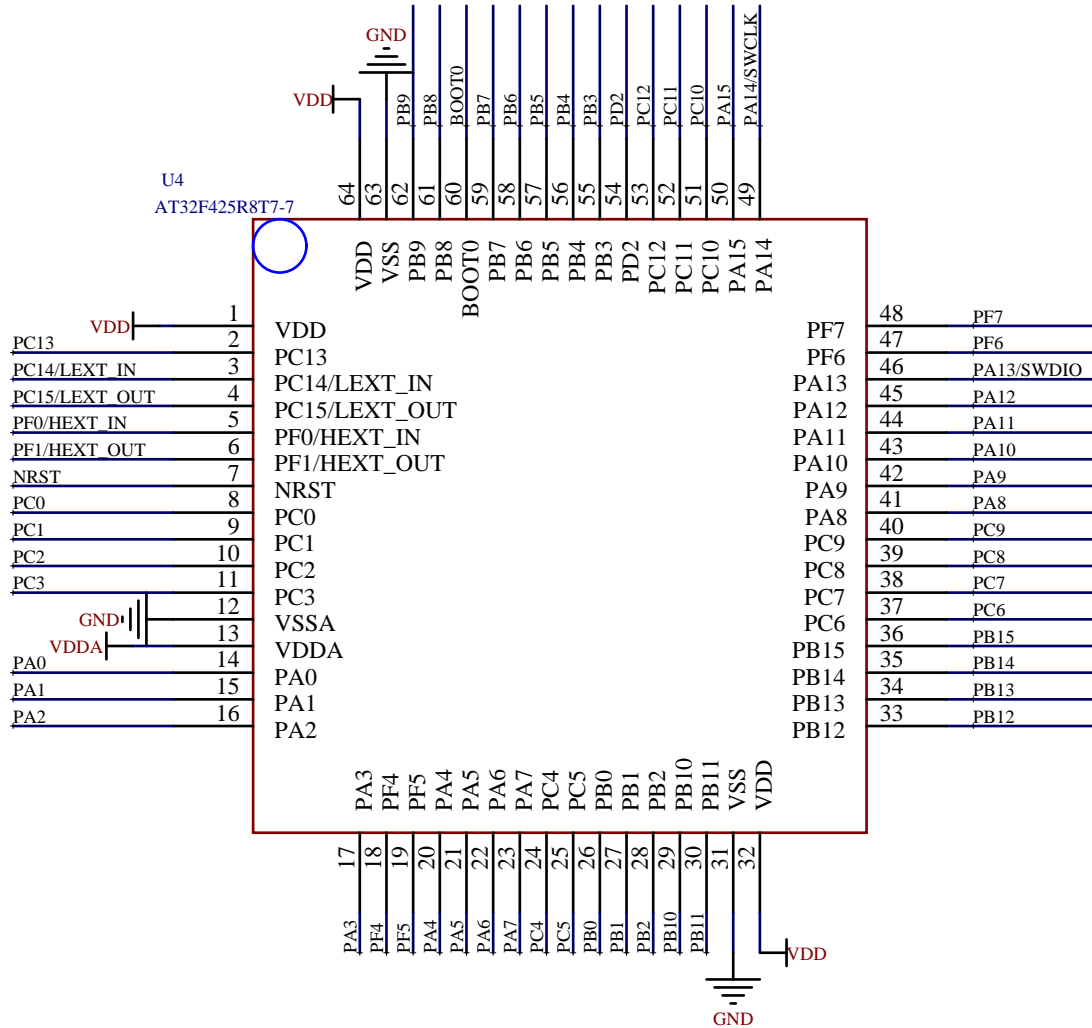
MCU power supply




Crystal

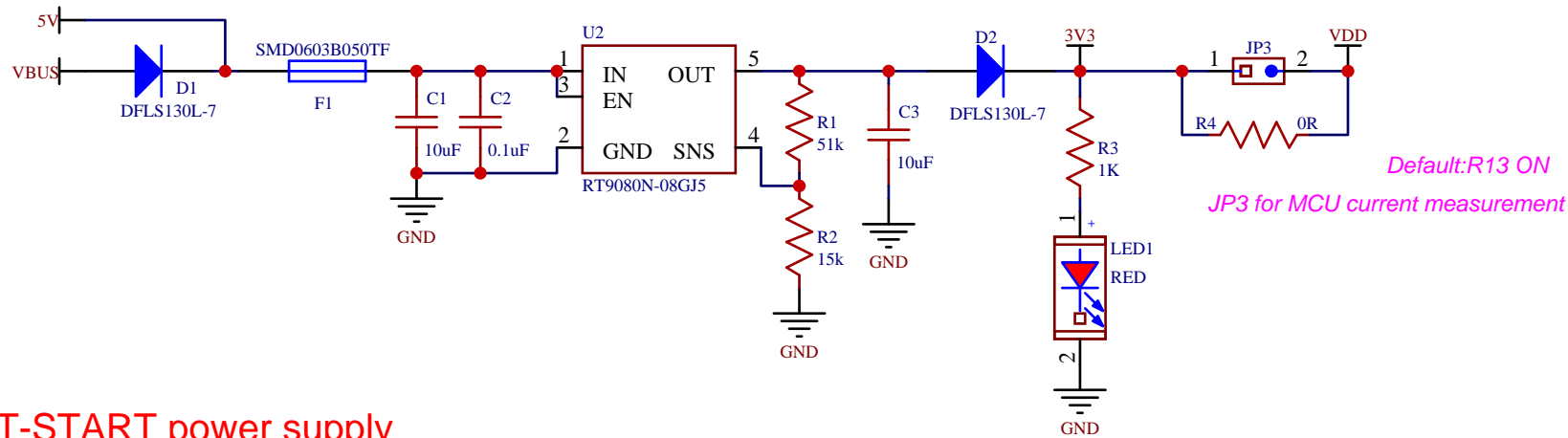


Boot & Reset

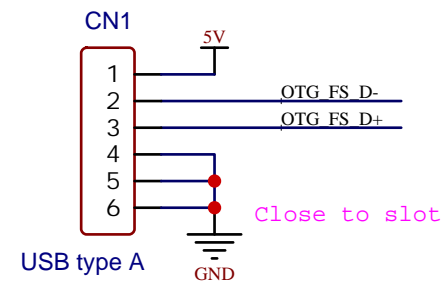


MCU

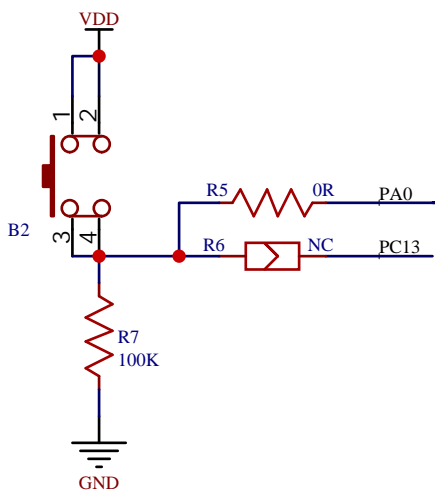
TITLE: MCU		REV: 1.0
	Company: Artery Technology	Sheet: 2
	Date: 2021-12-20 Drawn By:	



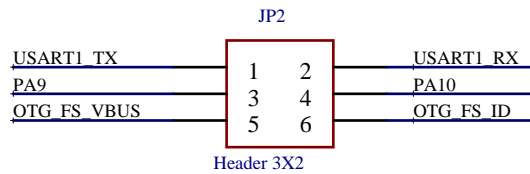
AT-START power supply



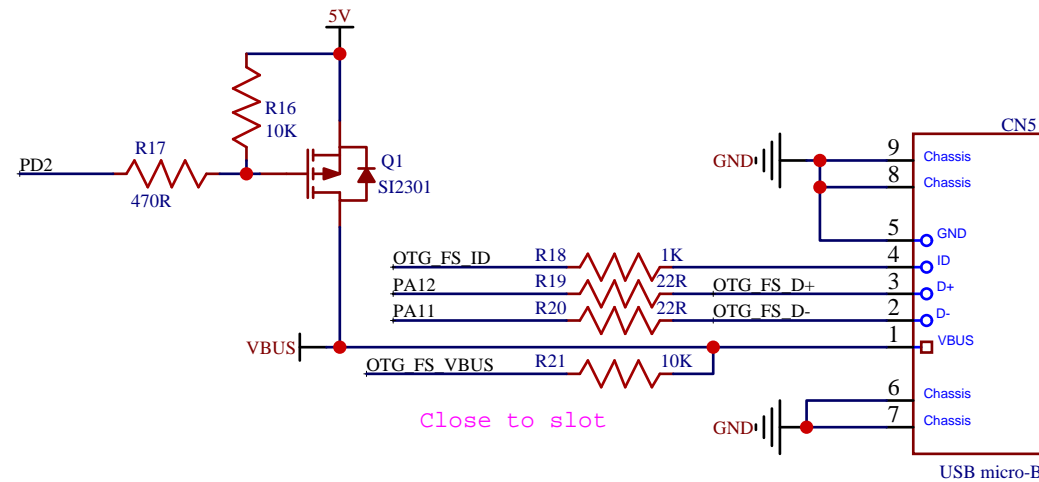
OTG1_host



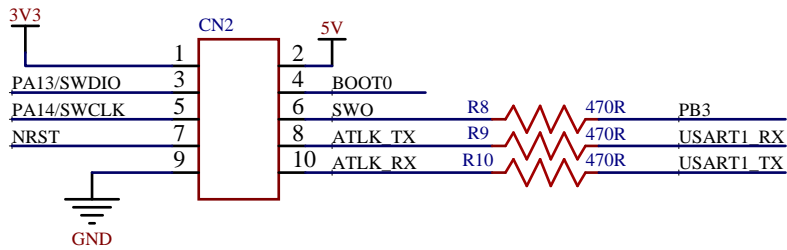
User key



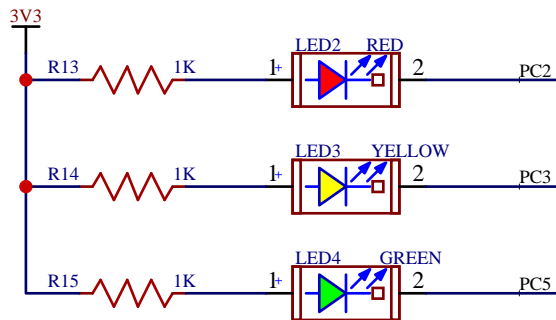
USART1 / OTG1 selection



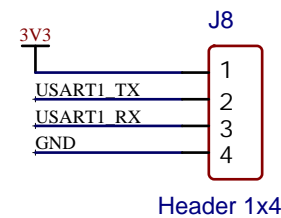
OTG1



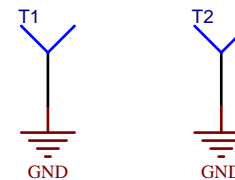
AT-Link connector



LED

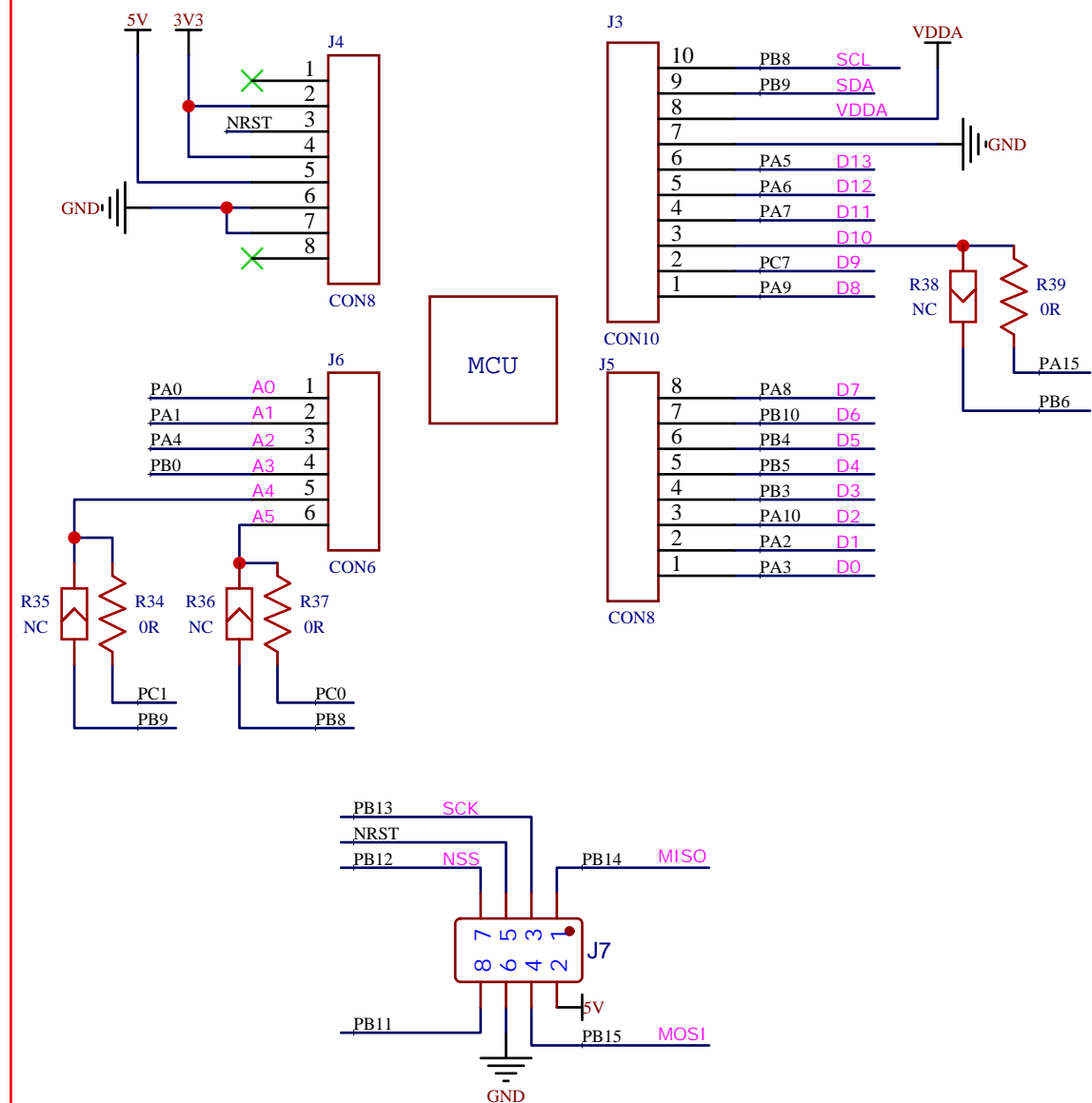
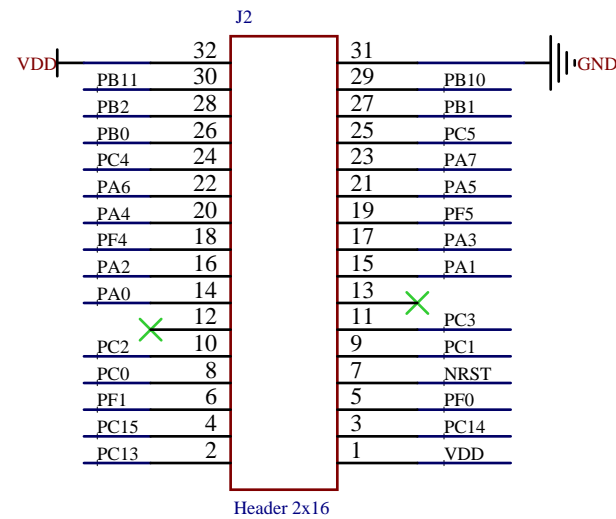
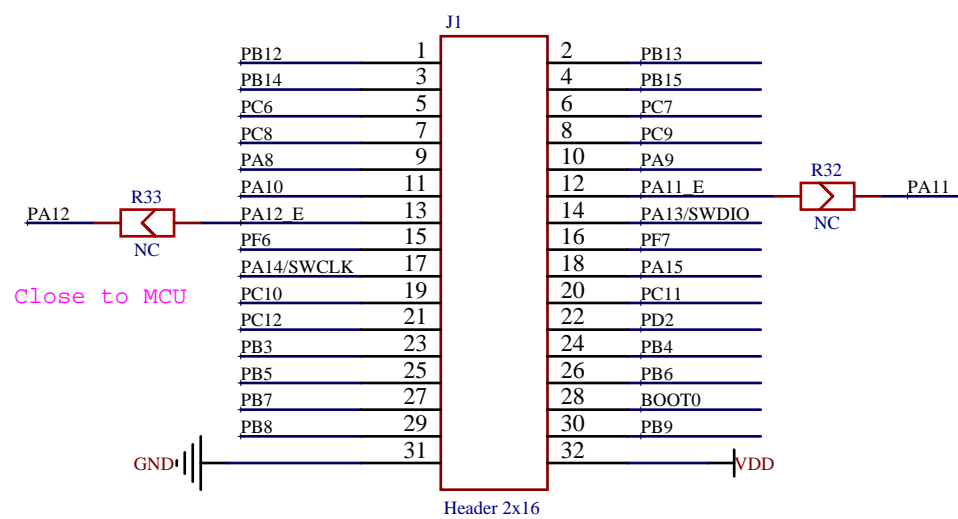


USART1 for ISP



Test points

TITLE:		REV: 1.0
Power & Peripherals		
Company: Artery Technology		Sheet: 3
Date: 2021-12-20		Drawn By:



Arduino UNO R3 connectors

TITLE: Extension connector		REV: 1.0
	Company: Artery Technology	Sheet: 4
	Date: 2021-12-20 Drawn By:	