

**Getting started with AT32F455ZET7**

---

## **Introduction**

The AT-START-F455 evaluation board is designed to help you explore the high performance of the 32-bit microcontroller AT32F455, with the ARM Cortex®-M4F core and FPU, and expedite development cycles and shorten time to market.

The AT-START-F455 evaluation board is based on the AT32F455ZET7 microcontroller. It features LEDs, buttons, a USB type-C connector, a USB type-A connector, Arduino™ Uno R3 extension connectors and a 16 Mbytes SPI Flash memory (extended through QSPI1). It also comes with a built-in AT-Link-EZ for debugging/programming purposes, without the need of other development tools.

## Contents

|          |   |           |
|----------|---|-----------|
| <b>1</b> | <b>Overview .....</b>                                   | <b>5</b>  |
| 1.1      | Features .....  | 5         |
| 1.2      | Definition of terms .....                               | 5         |
| <b>2</b> | <b>Quick start guide .....</b>                          | <b>6</b>  |
| 2.1      | Get started.....  | 6         |
| 2.2      | Development toolchains .....                            | 6         |
| <b>3</b> | <b>Hardware layout and configuration .....</b>          | <b>7</b>  |
| 3.1      | Power supply sources .....                              | 9         |
| 3.2      | IDD .....   | 9         |
| 3.3      | Embedded AT-Link-EZ for programming and debugging ..... | 9         |
| 3.4      | Boot mode selection .....                               | 10        |
| 3.5      | External clock sources.....                             | 10        |
| 3.5.1    | HEXT clock sources .....                                | 10        |
| 3.5.2    | LEXT clock source .....                                 | 10        |
| 3.6      | LEDs .....  | 11        |
| 3.7      | Buttons .....   | 11        |
| 3.8      | OTGFS configuration.....                                | 11        |
| 3.9      | QSPI Flash memory .....                                 | 11        |
| 3.10     | 0Ω resistors .....                                      | 12        |
| 3.11     | Extension connectors .....                              | 13        |
| 3.11.1   | Arduino™ Uno R3 connectors .....                        | 13        |
| 3.11.2   | LQFP144 I/O extension connectors.....                   | 14        |
| <b>4</b> | <b>Revision history.....</b>                            | <b>15</b> |

## List of tables

|   |    |
|---|----|
| Table 1. Boot mode selection jumper settings .....                | 10 |
| Table 2. 0Ωresistor settings .....                                | 12 |
| Table 3. Arduino™ Uno R3 extension connector pin definition ..... | 13 |
| Table 4. Document revision history .....                          | 15 |

## List of figures

|  |   |
|--|---|
| Figure 1. Hardware block diagram ..... | 7 |
| Figure 2. Top layer .....              | 8 |
| Figure 3. Bottom layer .....           | 8 |

# 1 Overview

## 1.1 Features

The AT-START-F455 board has the following features:

- ARM Cortex®-M4F-based 32-bit AT32F455ZET7 microcontroller with FPU that embeds 512 KB Flash memory and default 144 KB SRAM, in LQFP144 package
- On-board AT-Link connector:
  - On-board AT-Link-EZ for programming and debugging purposes (AT-Link-EZ is a simplified version of AT-Link, without offline mode support)
  - If the AT-Link-EZ is separated from the AT-START-F455, it can be connected with an independent AT-Link for programming and debugging purposes
- 16 Mbytes SPI Flash (EN25QH128A) is used as extended Flash memory
- Power supply source:
  - USB bus of AT-Link-EZ
  - OTGFS1 bus ( $V_{BUS}$ ) of AT-START-F455
  - External 5 V power supply (E5V)
  - External 3.3 V power supply
- 4 x LED indicators:
  - LED1 (red) indicates that 3.3 V is being supplied
  - 3 x User LEDs, LED2 (red), LED3 (yellow) and LED4 (green) indicate operation status
- User button and Reset button
- 8 MHz HEXT crystal
- 32.768 kHz LEXT crystal
- For OTGFS1 application, a USB type-A and a USB type-C connectors for OTGFS1 on board
- Rich extension connectors:
  - Arduino™ Uno R3 extension connectors
  - LQFP144 I/O extension connectors

## 1.2 Definition of terms

- **Jumper JPx ON**  
Jumper fitted
- **Jumper JPx OFF**  
Jumper not fitted
- **Resistor Rx ON / network resistor PRx ON**  
Short by solder, 0Ω resistor or network resistor.
- **Resistor Rx OFF / network resistor PRx OFF**  
Connections left open.

## 2 Quick start guide

### 2.1 Get started

Configure the AT-START-F455 board in the following sequence:

1. Check the Jumper's position on board:  
JP1 is connected to GND or OFF (BOOT0 = 0, and BOOT0 has an internal pull-down resistor in the AT32F455ZET7);  
JP2 is connected to GND (BOOT1=0)
2. Connect the AT-Link-EZ to PC via a USB cable (type A to type-C) so that the board is powered via USB connector CN6. LED1 (red) is always on, and three other LEDs (LED2 to LED4) start to flash in turn.
3. After pressing User button (B2), the flashing frequency of three LEDs is changed.

### 2.2 Development toolchains

- ARM® Keil®: MDK-ARM™
- IAR™: EWARM
- AT32 IDE

### 3 Hardware layout and configuration

The AT-START-F455 board is designed around an AT32F455ZET7 microcontroller in LQFP144 package.

Figure 1 shows the connections between AT-Link-EZ, AT32F455ZET7 and their peripherals (buttons, LEDs, USB OTG, SPI Flash and extension connectors) on AT-START-F455 board.

*Figure 2* and *Figure 3* shows their respective locations on the AT-Link-EZ and AT-START-F455 board.

**Figure 1. Hardware block diagram**

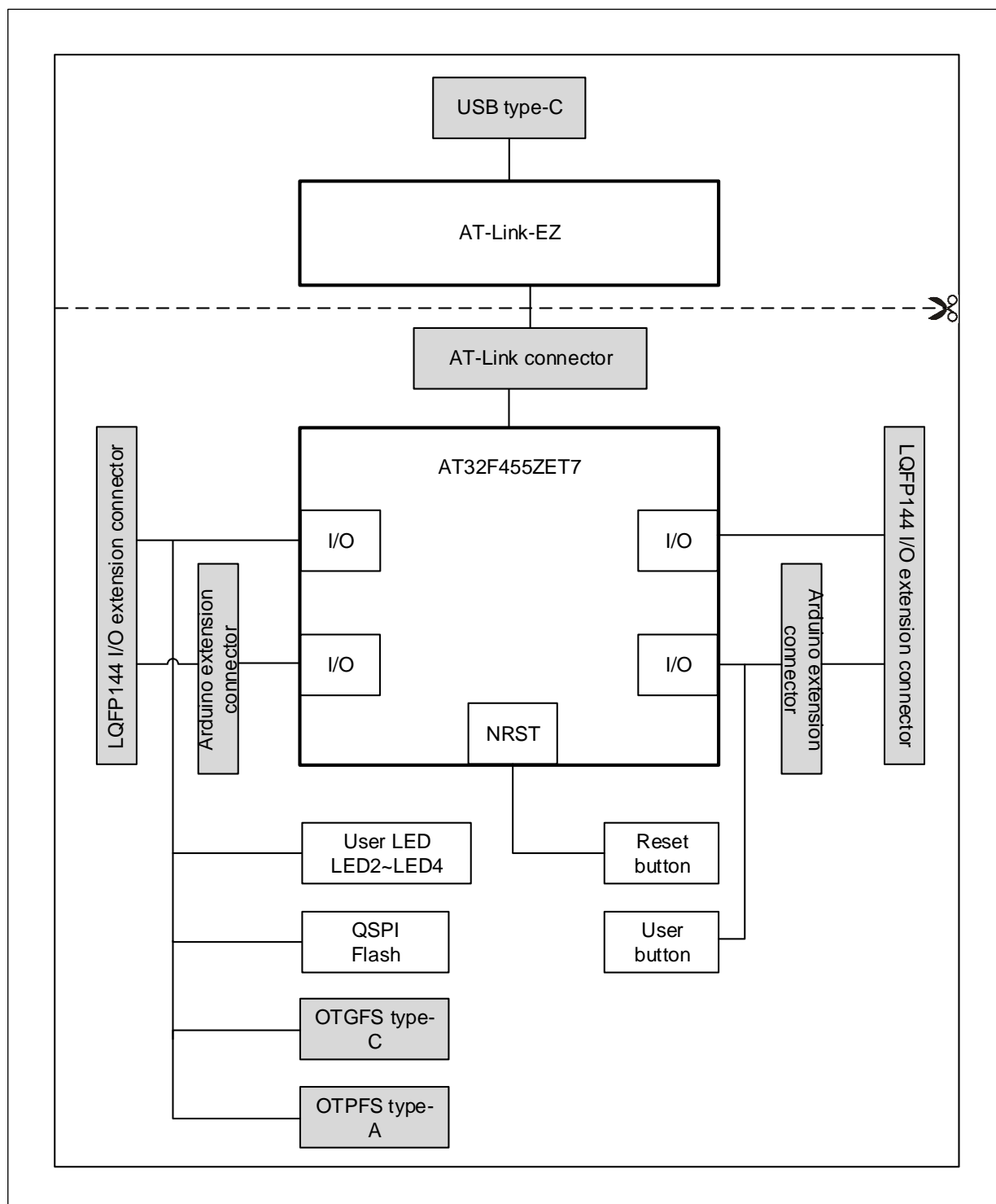


Figure 2. Top layer

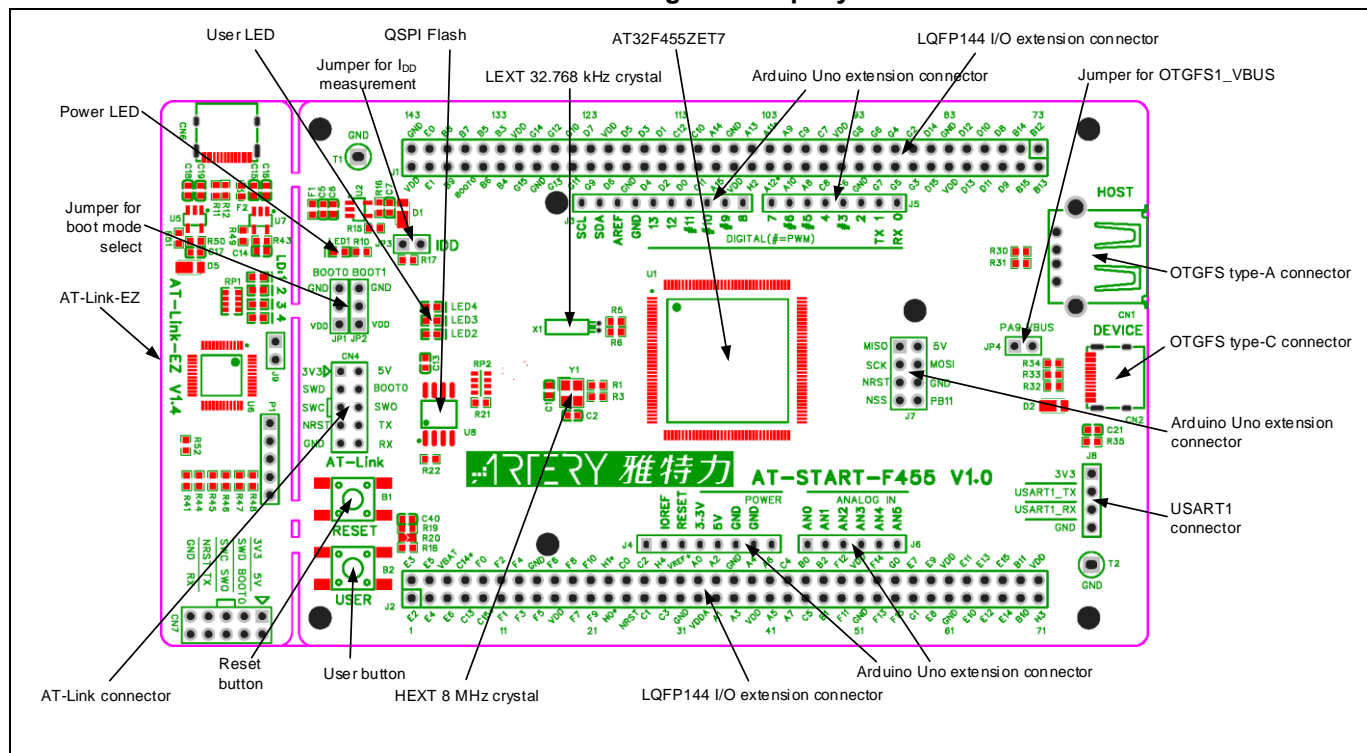
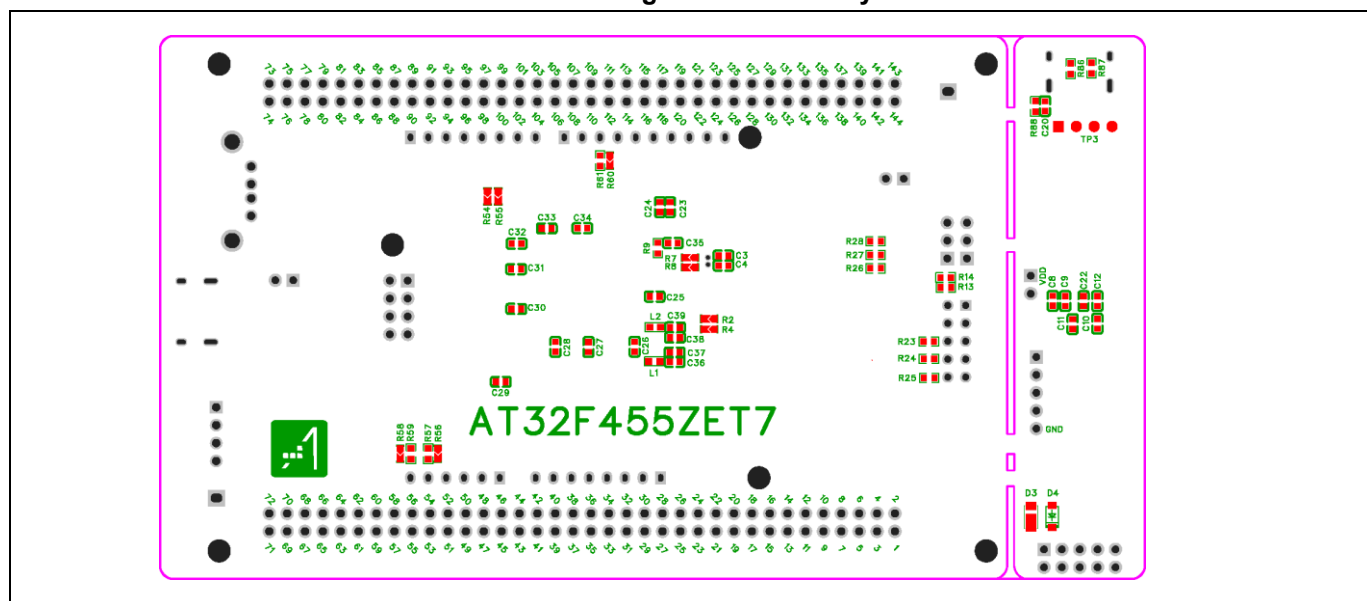


Figure 3. Bottom layer





### 3.1 Power supply sources

The AT-START-F455 can be supplied with 5 V through a USB cable (either via USB connector CN6 on the AT-Link-EZ or USB connector CN2 on the AT-START-F455 board). It can also be supplied with an external 5 V power supply (E5V). The 3.3 V required for the microcontroller and its peripherals is then provided via a 5 V-to- 3.3 V voltage regulator (U2).

Additionally, the 5 V pin of J4 or J7 can also be used as an input power source to supply the AT-START-F455 board.

The 3.3 V pin of J4, or the VDD of J1 and J2 can be used as 3.3 V input power source of the AT-START-F455 board.

*Note: Unless 5 V is provided via the USB connector (CN6) on AT-Link-EZ, the AT-Link-EZ would not be powered by other power supply methods.*

When another application board is connected to J4, 5 V and 3.3 V pins can be used as output power supply, the 5V pin of J7 as 5 V output power supply, and the VDD pin of J1 and J2 as 3.3 V output power supply.

### 3.2 IDD

When JP3 OFF (symbol IDD) and R17 OFF, an ammeter can be connected to measure the power consumption of AT32F455ZET7.

- **JP3 OFF, R17 ON:**

AT32F455ZET7 is being powered. (Default setting, and JP3 connector not mounted before shipping)

- **JP3 ON, R17 OFF:**

AT32F455ZET7 is being powered.

- **JP3 OFF, R17 OFF:**

An ammeter must be connected to measure the power consumption of the AT32F455ZET7. If there is no ammeter available, the AT32F455ZET7 cannot be powered.

### 3.3 Embedded AT-Link-EZ for programming and debugging

The evaluation board integrates Artery AT-Link-EZ for users to program/debug the AT32F455ZET7 on the AT-START-F455 board. AT-Link-EZ supports SWD interface mode and SWO debugging. It also offers a virtual COM port (VCP) to be connected to the USART1\_TX/USART1\_RX (PA9/PA10) of AT32F455ZET7.

Please refer to [AT-Link User Manual](#) for complete details on AT-Link-EZ.

The AT-Link-EZ can be separated from the AT-START-F455 board. In this case, the CN4 connector (not mounted before shipping) of the AT-START-F455 can still be connected to the CN7 connector (not mounted before shipping) of the AT-Link-EZ to reestablish connection between them. Alternatively, the evaluation board can be connected to AT-Link via AT-Link connector to continue programming and debugging the AT32F455ZET7.

## 3.4 Boot mode selection

At startup, three different boot modes are available for selection through pin configuration.

**Table 1. Boot mode selection**

| Jumper   | Pin configuration |       | Boot mode  |
|--|-------------------|-------|--|
|  | BOOT1             | BOOT0 |  |
| JP1 to GND or be OFF<br>JP2 to arbitrary position<br>or be OFF | X                 | 0     | Boot from Flash memory (factory default setting) |
| JP1 to VDD<br>JP2 to GND                                       | 0                 | 1     | Boot from system memory                          |
| JP1 to VDD<br>JP2 to VDD                                       | 1                 | 1     | Boot from internal SRAM                          |

## 3.5 External clock sources

### 3.5.1 HEXT clock sources

There are three hardware methods to configure the external high-speed clock sources.

- **On-board crystal (factory default setting)**

The on-board 8 MHz crystal is used as HEXT clock source. Hardware settings: R1 and R3 must be ON, R2 and R4 OFF.

- **External oscillator from PH0**

External oscillator is injected from the pin\_23 of J2. Hardware settings: R2 must be ON, R1 and R3 OFF. To use PH1 as GPIO, R4 ON is connected to the pin\_24 of J2.

- **HEXT not used**

PH0 and PH1 are used as GPIOs. Hardware settings: R2 and R4 must be ON, R1 and R3 OFF.

### 3.5.2 LEXT clock source

There are three hardware methods to configure the external low-speed clock sources.

- **On-board crystal (Factory default setting)**

The on-board 32.768 kHz crystal is used as LEXT clock source. Hardware settings: R5 and R6 must be ON, R7 and R8 OFF

- **External oscillator from PC14**

External oscillator is injected from the pin\_3 of J2. Hardware settings: R7 and R8 must be ON, R5 and R6 OFF.

- **LEXT not used**

PC14 and PC15 are used as GPIOs. Hardware settings: R7 and R8 must be ON, R5 and R6 OFF.

### 3.6 LEDs

- **Power LED1**  
Red LED indicates that the 3.3 V of AT-START-F455 board is being powered.
- **User LED2**  
Red LED is connected to the PD13 pin of AT32F455ZET7. The User LED lights on when PD13 outputs low.
- **User LED3**  
Yellow LED is connected to the PD14 pin of AT32F455ZET7. The User LED lights on when PD14 outputs low.
- **User LED4**  
Green LED is connected to the PD15 pin of AT32F455ZET7. The User LED lights on when PD15 outputs low.

### 3.7 Buttons

- **Reset B1: Reset button**  
It is connected to NRST to reset AT32F455ZET7 microcontroller.
- **User B2: User button**  
By default, it is connected to the PA0 of AT32F455ZET7 and used as a WKUP button (R19 ON and R20 OFF); it can also be connected to the PC13 and used as TAMPER button (R19 OFF and R20 ON)

### 3.8 OTGFS configuration

The AT-START-F455 board supports OTGFS1 full-speed/low-speed host or full-speed device mode via a USB type-C connector (CN2). In device mode, the AT32F455ZET7 can be directly connected to the host through a USB type-C cable, and  $V_{BUS}$  can be used as 5 V input of the AT-START-F455 board. The AT-START-F455 board also offers a USB type-A connector (CN1) which is used as OTGFS host interface to connect to USB disk and other devices.

If the PA9 of the AT32F455ZET7 is to be used as OTGFS1\_VBUS, the JP4 jumper must be ON (it is OFF by default and without jumper cap attached) so that the PA9 is connected to the USB type-C CN2 connector.

### 3.9 QSPI Flash memory

The on-board SPI Flash (EN25QH128A), connected to the AT32F455ZET7 via QSPI1 interface, is used as an extended Flash memory.

The QSPI1 interface is connected to Flash memory through PF6~10 and PG6. If these GPIOs are to be used for other purposes, it is recommended to set RP2, R21 and R22 off in advance.

### 3.10 0Ω resistors

Table 2. 0Ω resistor settings

| Resistors  | State <sup>(1)</sup>    | Description   |
|--|-------------------------|---|
| R17<br>(Microcontroller power consumption measurement) | <b>ON</b>               | When JP3 OFF, the microcontroller is powered by 3.3V.   |
|  | OFF                     | When JP3 OFF, an ammeter can be connected to measure the power consumption of the microcontroller.<br>(The microcontroller cannot be powered without ammeter) |
| R9<br>(V <sub>BAT</sub> )                              | <b>ON</b>               | V <sub>BAT</sub> is connected to VDD  |
|  | OFF                     | V <sub>BAT</sub> is supplied through the pin_6 (VBAT) of J2.  |
| R1, R2, R3, R4<br>(HEXT)                               | <b>ON, OFF, ON, OFF</b> | The crystal Y1 on board is used as HEXT clock source  |
|  | OFF, ON, OFF, OFF       | HEXT clock source is from external PH0, PH1 is not used.  |
|  | OFF, ON, OFF, ON        | HEXT clock source is from external PH0, PH1 is used as GPIO; or PH0 and PH1 are used as GPIOs.  |
| R5, R6, R7, R8<br>(LEXT)                               | <b>ON, ON, OFF, OFF</b> | The crystal X1 on board is used as LEXT clock source  |
|  | OFF, OFF, ON, ON        | LEXT clock source is from external PC14; or PC14 and PC15 are used as GPIOs.  |
| R19, R20<br>(User button B2)                           | <b>ON, OFF</b>          | User button B2 is connected to PA0.   |
|  | OFF, ON                 | User button B2 is connected to PC13.  |
| R54, R55<br>(PA11, PA12)                               | <b>OFF, OFF</b>         | As OTGFS1, PA11 and PA12 are disconnected from the pin_31 and pin_32 of J1.   |
|  | ON, ON                  | When PA11 and PA12 are not used as OTGFS1, they are connected to the pin_31 and pin_32 of J1.   |
| R56, R57, R58, R59<br>(Arduino™ AN4, AN5)              | <b>OFF, ON, OFF, ON</b> | Arduino™ AN4 and AN5 are connected to ADC12_IN11 and ADC12_IN10.  |
|  | ON, OFF, ON, OFF        | Arduino™ AN4 and AN5 are connected to I2C1_SDA, I2C1_SCL.   |
| R60, R61<br>(Arduino™ D10)                             | <b>OFF, ON</b>          | Arduino™ D10 is connected to SPI1_CS.   |
|  | ON, OFF                 | Arduino™ D10 is connected to PVM (TMR4_CH1).  |

(1) The factory default Rx state is shown in **BOLD** font.

## 3.11 Extension connectors

### 3.11.1 Arduino™ Uno R3 connectors

Female connectors J3~J6 and male J7 support Arduino™ Uno R3 connectors. Most of the daughter boards built on Arduino™ Uno R3 are suitable to the AT-START-F455 board.

*Note: The I/Os of the AT32F455ZET7 are 3.3 V-compatible with Arduino™ Uno R3, but 5 V not.*

**Table 3. Arduino™ Uno R3 extension connectors**

| Connector                            | Pin number | Arduino pin name | AT32F455 pin name          | Description              |
|--------------------------------------|------------|------------------|----------------------------|--------------------------|
| J4<br>(Power supply)                 | 1          | NC               | -                          | -                        |
|                                      | 2          | IOREF            | -                          | 3.3 V reference voltage  |
|                                      | 3          | RESET            | NRST                       | External reset           |
|                                      | 4          | 3.3V             | -                          | 3.3 V input/output       |
|                                      | 5          | 5V               | -                          | 5 V input/output         |
|                                      | 6          | GND              | -                          | Ground                   |
|                                      | 7          | GND              | -                          | Ground                   |
|                                      | 8          | NC               | -                          | -                        |
| J6<br>(Analog input)                 | 1          | AN0              | PA0                        | ADC12_IN0                |
|                                      | 2          | AN1              | PA1                        | ADC12_IN1                |
|                                      | 3          | AN2              | PA4                        | ADC12_IN4                |
|                                      | 4          | AN3              | PB0                        | ADC12_IN8                |
|                                      | 5          | AN4              | PC1 or PB9 <sup>(1)</sup>  | ADC12_IN11 or I2C1_SDA   |
|                                      | 6          | AN5              | PC0 or PB8 <sup>(1)</sup>  | ADC12_IN10 or I2C1_SCL   |
| J5<br>(Logic input/output low byte)  | 1          | D0               | PA3                        | USART2_RX                |
|                                      | 2          | D1               | PA2                        | USART2_TX                |
|                                      | 3          | D2               | PA10                       | -                        |
|                                      | 4          | D3               | PB3                        | TMR2_CH2                 |
|                                      | 5          | D4               | PB5                        | -                        |
|                                      | 6          | D5               | PB4                        | TMR3_CH1                 |
|                                      | 7          | D6               | PB10                       | TMR2_CH3                 |
|                                      | 8          | D7               | PA8                        | -                        |
| J3<br>(Logic input/output high byte) | 1          | D8               | PA9                        | -                        |
|                                      | 2          | D9               | PC7                        | TMR3_CH2                 |
|                                      | 3          | D10              | PA15 or PB6 <sup>(1)</sup> | SPI1_CS or TMR4_CH1      |
|                                      | 4          | D11              | PA7                        | TMR3_CH2 / SPI1_MOSI     |
|                                      | 5          | D12              | PA6                        | SPI1_MISO                |
|                                      | 6          | D13              | PA5                        | SPI1_SCK                 |
|                                      | 7          | GND              | -                          | Ground                   |
|                                      | 8          | AREF             | -                          | V <sub>REF+</sub> output |
|                                      | 9          | SDA              | PB9                        | I2C1_SDA                 |
|                                      | 10         | SCL              | PB8                        | I2C1_SCL                 |

| Connector      | Pin number | Arduino pin name | AT32F455 pin name | Description      |
|----------------|------------|------------------|-------------------|------------------|
| J7<br>(Others) | 1          | MISO             | PB14              | SPI2_MISO        |
|                | 2          | 5V               | -                 | 5 V input/output |
|                | 3          | SCK              | PB13              | SPI2_SCK         |
|                | 4          | MOSI             | PB15              | SPI2_MOSI        |
|                | 5          | RESET            | NRST              | External reset   |
|                | 6          | GND              | -                 | Ground           |
|                | 7          | NSS              | PB12              | SPI2_CS          |
|                | 8          | GPIO             | PB11              | -                |

(1) Refer to [Table 2](#) for details on 0Ω resistor settings.

## 3.11.2 LQFP144 I/O extension connectors

The extension connectors J1 and J2 are used to connect the IOs of the AT-START-F455 to external devices. All the I/Os of the AT32F455ZET7 are accessible. J1 and J2 can also be measured with oscilloscope, logic analyzer or voltmeter probe.

## 4 Revision history

Table 4. Document revision history

| Date      | Revision | Changes         |
|-----------|----------|-----------------|
| 2025.1.20 | 1.00     | Initial release |

## IMPORTANT NOTICE – PLEASE READ CAREFULLY

Purchasers are solely responsible for the selection and use of ARTERY's products and services, and ARTERY assumes no liability whatsoever relating to the choice, selection or use of the ARTERY products and services described herein

No license, express or implied, to any intellectual property rights is granted under this document. If any part of this document deals with any third party products or services, it shall not be deemed a license granted by ARTERY for the use of such third party products or services, or any intellectual property contained therein, or considered as a warranty regarding the use in any manner of such third party products or services or any intellectual property contained therein.

Unless otherwise specified in ARTERY's terms and conditions of sale, ARTERY provides no warranties, express or implied, regarding the use and/or sale of ARTERY products, including but not limited to any implied warranties of merchantability, fitness for a particular purpose (and their equivalents under the laws of any jurisdiction), or infringement on any patent, copyright or other intellectual property right.

Purchasers hereby agree that ARTERY's products are not designed or authorized for use in: (A) any application with special requirements of safety such as life support and active implantable device, or system with functional safety requirements; (B) any aircraft application; (C) any aerospace application or environment; (D) any weapon application, and/or (E) or other uses where the failure of the device or product could result in personal injury, death, property damage. Purchasers' unauthorized use of them in the aforementioned applications, even if with a written notice, is solely at purchasers' risk, and Purchasers are solely responsible for meeting all legal and regulatory requirements in such use.

Resale of ARTERY products with provisions different from the statements and/or technical characteristics stated in this document shall immediately void any warranty grant by ARTERY for ARTERY's products or services described herein and shall not create or expand any liability of ARTERY in any manner whatsoever.

© 2025 ARTERY Technology – All rights reserved