

## How to use AT32Fxx CAN filter

### Introduction

This sample code is written to demonstrate how to use AT32 MCU's CAN filter. CAN filter is mainly used for selectively receiving messages.

*Note: This sample code is written based on Artery's V2.x.x BSP. For other versions of BSP, users should pay attention to the differences in use.*

Applicable products:

Product series	AT32Fxx series MCUs with CAN
----------------	------------------------------

List of major peripherals used:

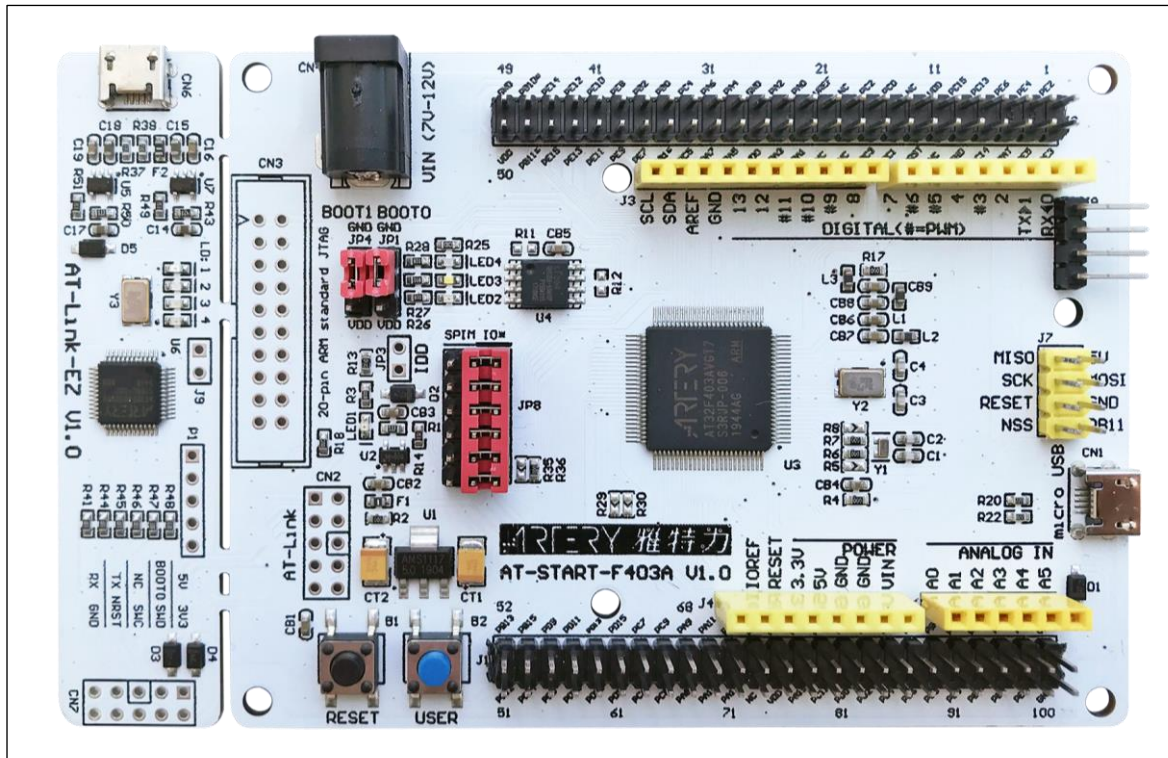
Peripherals	CAN
	GPIO

## 1 Quick start

### 1.1 Hardware resources

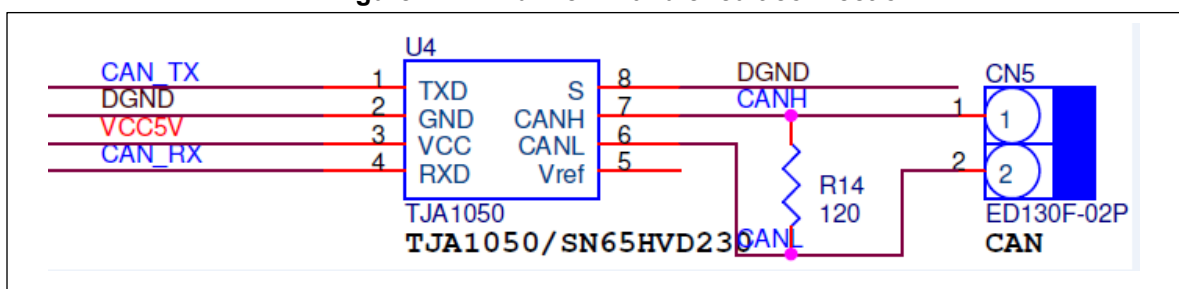
- 1) AT-START-F403A V1.0 evaluation board (for other product series, please use corresponding evaluation board). Use GPIO PB8 and PB9.

Figure 1. AT-START-F403A V1.0 evaluation board



- 2) CAN driver IC and simple schematic

Figure 2. CAN driver IC and circuit connection



TJA1050 (driver IC) is connected to MCU and CAN bus analyzer. It is mainly used for data conversion.

On the MCU part:

- ◆ CAN\_TX (refer to MCU's GPIOB\_PB9)——TJA1050's TXD pin
- ◆ CAN\_RX (refer to MCU's GPIOB\_PB8)——TJA1050's RXD pin

On the CAN bus analyzer part:

- ◆ CAN1\_L——TJA1050's CANL pin (refer to pin2 on CN5 in Figure 2)
- ◆ CAN1\_H——TJA1050's CANH pin (refer to pin1 on CN5 in Figure 2)

### 3) CAN bus analyzer and its wiring

Figure 3. CAN bus analyzer



Note: Besides connecting to CAN1\_L and CAN1\_H, the CAN bus analysis device must share the same ground with MCU.

## 1.2 Software resources

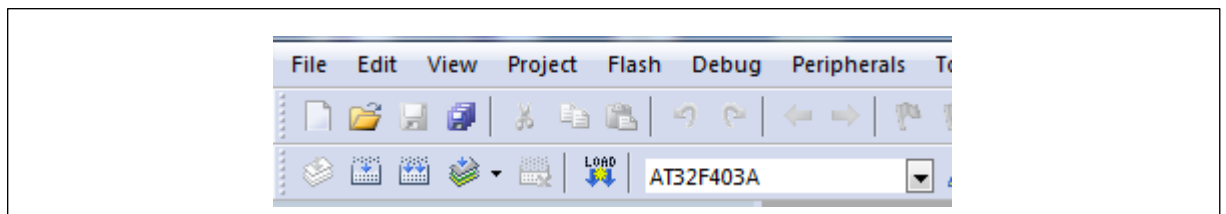
- 1) SourceCode
  - can\_filter

Note: All of projects are built based on Keil 5. For the need to run in other compiling environments, user can make simple adjustments according to AT32xxx\_Firmware\_Library\_V2.x.x\project\at\_start\_xxx\templates.

## 1.3 Example case

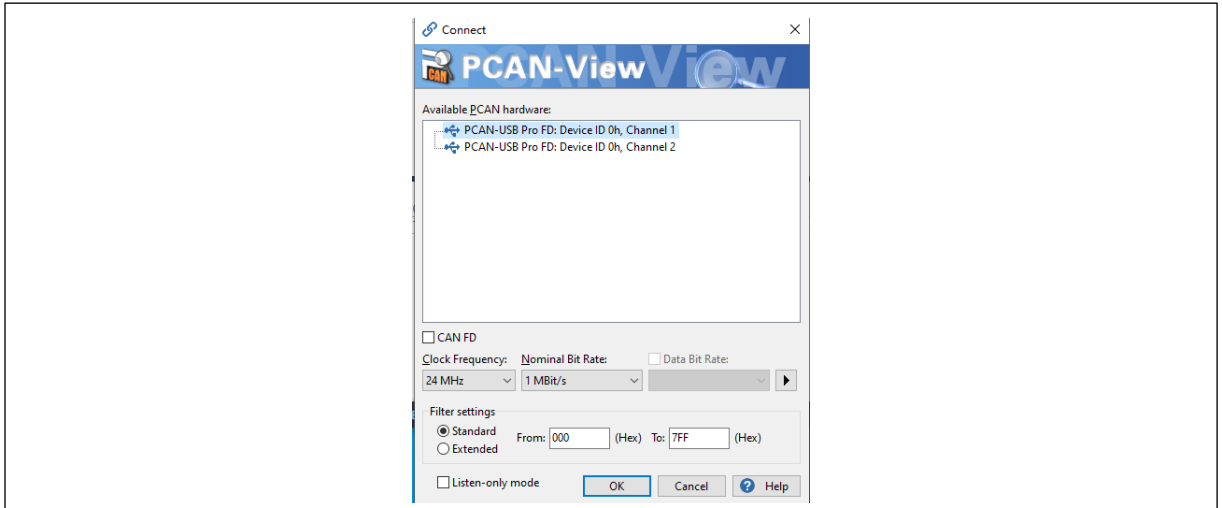
- 1) Open the source code **can\_filter**, compile and download it to the evaluation board
- 2) This test uses AT-START-F403A V1.0 evaluation board, so in Figure 4 we choose AT32F403A

Figure 4. Choose Keil project



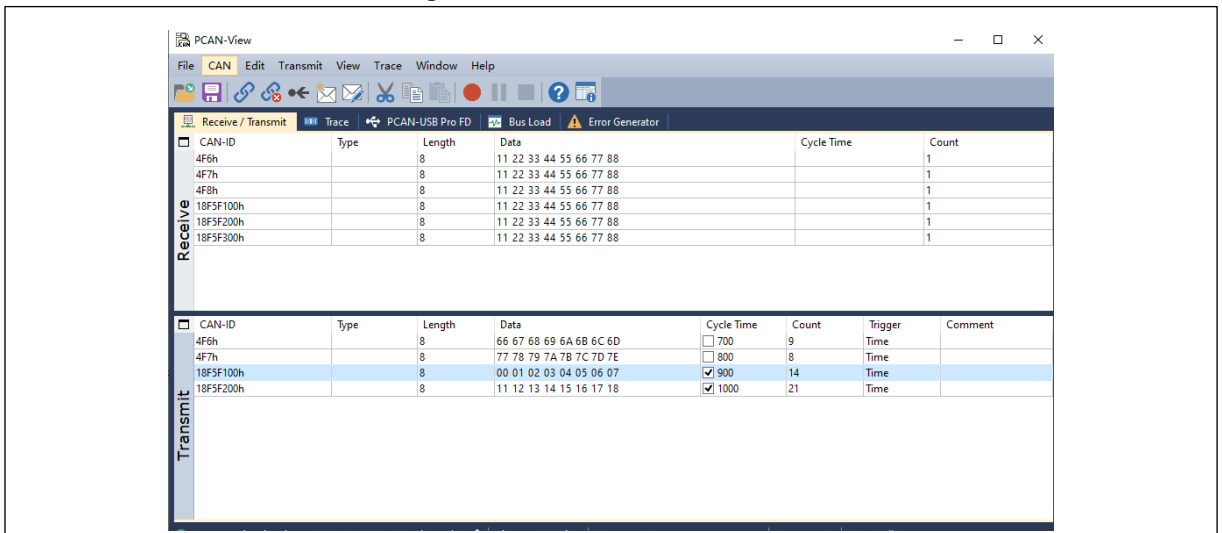
- 3) Open **PCAN-tool**, select a device and open it, select "**Clock Frequency**" and set **1Mbit/s** in Nominal Bit Rate, then click "**OK**"

Figure 5. PCAN-tool settings



- 4) After opening **PCAN-tool**, You would see the following information relating to data receive and transmit.

Figure 6. Data receive and transmit



In “**Transmit**” column, you can set data format and content which are to be sent to MCU.

In “**Receive**” column, you can see data sent from MCU.

In addition to **PCAN-tool** monitoring, MCU can also indicate data receive and transmit by toggling LED. In other words, LED2, LED3 and LED4 will toggle each time four frames of desired messages are received.

## 2 Revision history

Table 1. Document revision history

Date	Revision	Changes
2021.12.03	2.0.0	Initial release
2023.03.21	2.0.1	Updated figures.

## IMPORTANT NOTICE – PLEASE READ CAREFULLY

Purchasers are solely responsible for the selection and use of ARTERY's products and services, and ARTERY assumes no liability whatsoever relating to the choice, selection or use of the ARTERY products and services described herein.

No license, express or implied, to any intellectual property rights is granted under this document. If any part of this document deals with any third party products or services, it shall not be deemed a license grant by ARTERY for the use of such third party products or services, or any intellectual property contained therein, or considered as a warranty regarding the use in any manner whatsoever of such third party products or services or any intellectual property contained therein.

Unless otherwise specified in ARTERY's terms and conditions of sale, ARTERY provides no warranties, express or implied, regarding the use and/or sale of ARTERY products, including but not limited to any implied warranties of merchantability, fitness for a particular purpose (and their equivalents under the laws of any jurisdiction), or infringement of any patent, copyright or other intellectual property right.

Purchasers hereby agrees that ARTERY's products are not designed or authorized for use in: (A) any application with special requirements of safety such as life support and active implantable device, or system with functional safety requirements; (B) any air craft application; (C) any automotive application or environment; (D) any space application or environment, and/or (E) any weapon application. Purchasers' unauthorized use of them in the aforementioned applications, even if with a written notice, is solely at purchasers' risk, and is solely responsible for meeting all legal and regulatory requirement in such use.

Resale of ARTERY products with provisions different from the statements and/or technical features stated in this document shall immediately void any warranty grant by ARTERY for ARTERY products or services described herein and shall not create or expand in any manner whatsoever, any liability of ARTERY.

© 2023 Artery Technology -All rights reserved