

AT32F415 ERTC Auto Wake-up Timer

Introduction

This example code demonstrates how to use ERTC automatic wakeup timer in AT32F415 series.

Note: This sample code is written based on Artery's V2.x.x BSP. For other versions of BSP, users should pay attention to the differences in use.

Applicable products:

Product series	AT32F415 series
----------------	-----------------

List of major peripherals used:

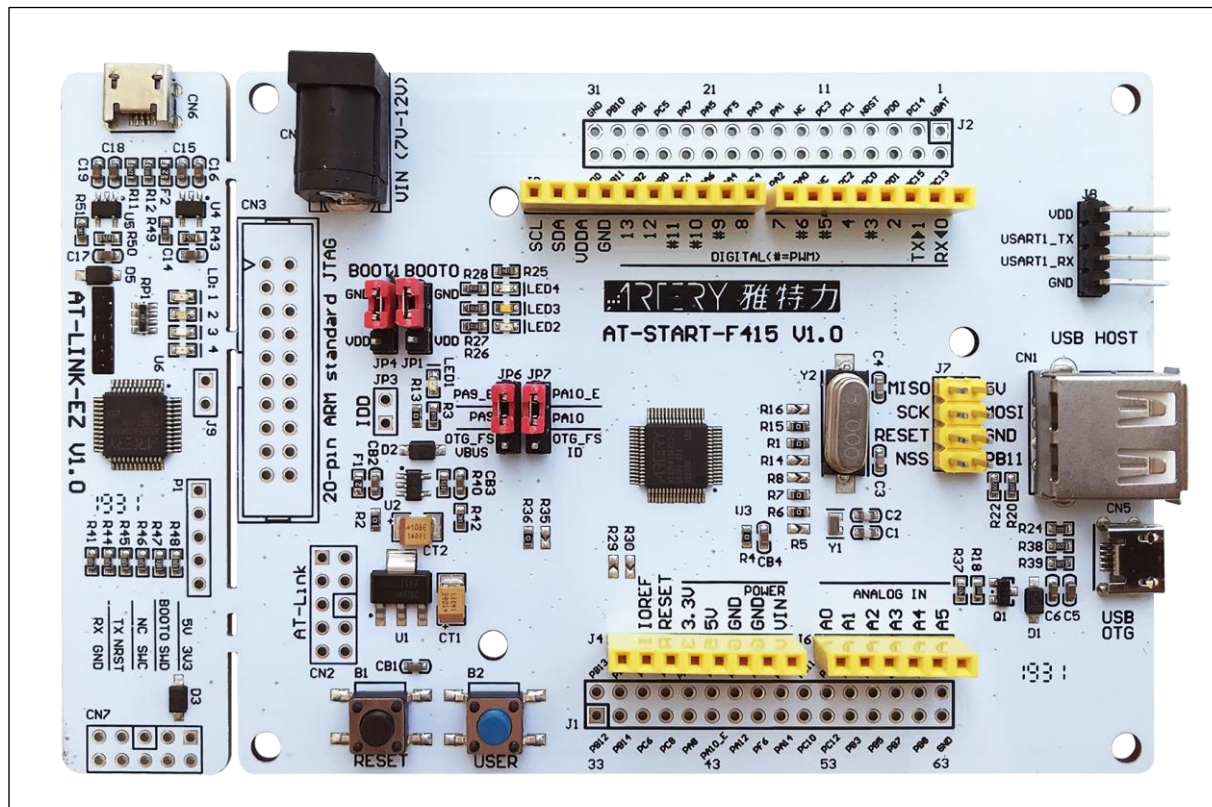
Peripherals	ERTC
-------------	------

1 Quick start

1.1 Hardware resources

- 1) AT-START-F415 V1.0 evaluation board
- 2) Serial interfaces: PA9, PA10

Figure 1. AT-START-F415 V1.0 evaluation board



1.2 Software resources

- 1) SourceCode
 - ERTC_Wakeup

Note: All of projects are built based on Keil 5. For the need to run them in other compiling environments, user can make simple adjustments according to AT32xxx_Firmware_Library_V2.x.x\project\at_start_xxx\templates.

1.3 Example case

- 1) Open “ERTC_Wakeup”, compile and download it to the evaluation board
- 2) Viewing print information via serial interfaces, the automatic wakeup timer takes 5 seconds to wake up MCU from Sleep mode

Figure 2. Print operation information

```
enter sleep mode
wakeup
wakeup from sleep mode
21-05-01 12:00:05
21-05-01 12:00:06
21-05-01 12:00:07
21-05-01 12:00:08
21-05-01 12:00:09
```

2 Revision history

Table 1. Document revision history

Date	Revision	Changes
2021.12.20	2.0.0	Initial release

IMPORTANT NOTICE – PLEASE READ CAREFULLY

Purchasers are solely responsible for the selection and use of ARTERY's products and services, and ARTERY assumes no liability whatsoever relating to the choice, selection or use of the ARTERY products and services described herein

No license, express or implied, to any intellectual property rights is granted under this document. If any part of this document deals with any third party products or services, it shall not be deemed a license granted by ARTERY for the use of such third party products or services, or any intellectual property contained therein, or considered as a warranty regarding the use in any manner of such third party products or services or any intellectual property contained therein.

Unless otherwise specified in ARTERY's terms and conditions of sale, ARTERY provides no warranties, express or implied, regarding the use and/or sale of ARTERY products, including but not limited to any implied warranties of merchantability, fitness for a particular purpose (and their equivalents under the laws of any jurisdiction), or infringement on any patent, copyright or other intellectual property right.

Purchasers hereby agree that ARTERY's products are not designed or authorized for use in: (A) any application with special requirements of safety such as life support and active implantable device, or system with functional safety requirements; (B) any aircraft application; (C) any aerospace application or environment; (D) any weapon application, and/or (E) or other uses where the failure of the device or product could result in personal injury, death, property damage. Purchasers' unauthorized use of them in the aforementioned applications, even if with a written notice, is solely at purchasers' risk, and Purchasers are solely responsible for meeting all legal and regulatory requirements in such use.

Resale of ARTERY products with provisions different from the statements and/or technical characteristics stated in this document shall immediately void any warranty grant by ARTERY for ARTERY's products or services described herein and shall not create or expand any liability of ARTERY in any manner whatsoever.